

VCI



Certified and Approved
To -40 °C/°F



Liquid & Gas
Safety Shutoff Valves
FM-7412

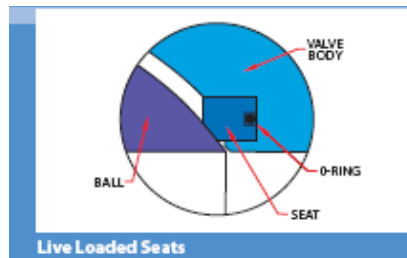


Certified and in full compliance to:
CSA 6.5—2000 / ANSI Z21.21—2000
CSA 6.5A—2000 / ANSI Z21.21A—2000
CSA 3.9—M94 / CGA 3.9 (C/I)
CSA 3.16

BETTER BY DESIGN

VCI developed a unique “Live Loaded” seating ball valve design to guarantee shutoff integrity at low temperatures (-40°F), and low to variable pressures for natural gas applications.

Advantage / Features



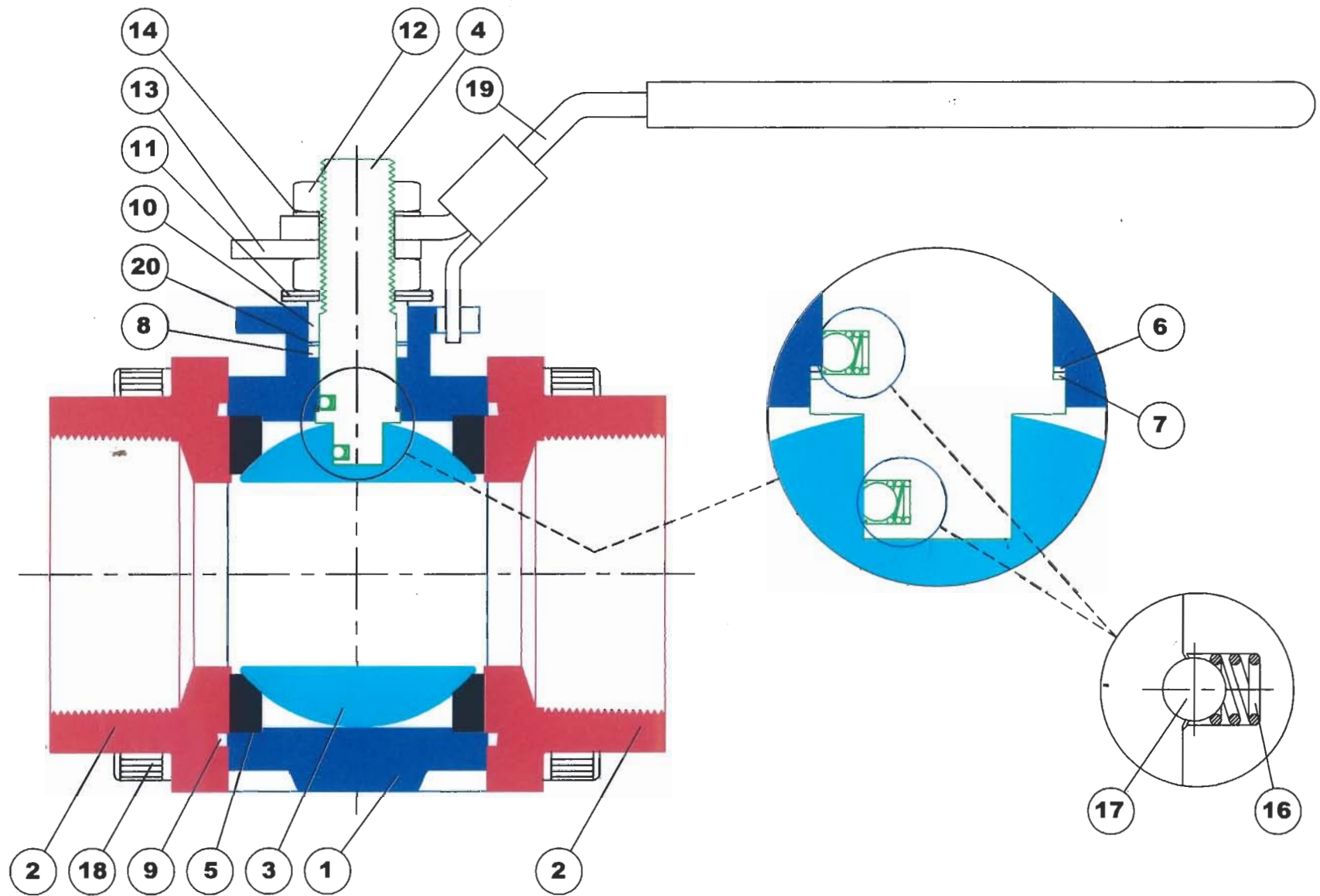
- Continuous full contact between seat and ball for both upstream & downstream seats.
- Eliminate possible entrapment of dirt and debris.
- Predictable, constant valve operating torques.
- Longer cycle life.

The “live loading” of the soft seat is accomplished by the installation of an elastomeric o-ring in a machined recess behind the seats. The natural material characteristics of the o-ring provides the energy required to energize the seat / ball interface under all pressure and temperature conditions.

Approval and accreditation to the stringent Live Functional Pressure testing requirements of CSA International and FM Global, has validated our belief that our products are “Better by Design”. VCI valves hold certifications with both CSA International and FM Global, after 100,000 cycles under pressure, VCI ball valves performed “Bubble-Tight Shut-off “results for size ranges ¼” to 8”

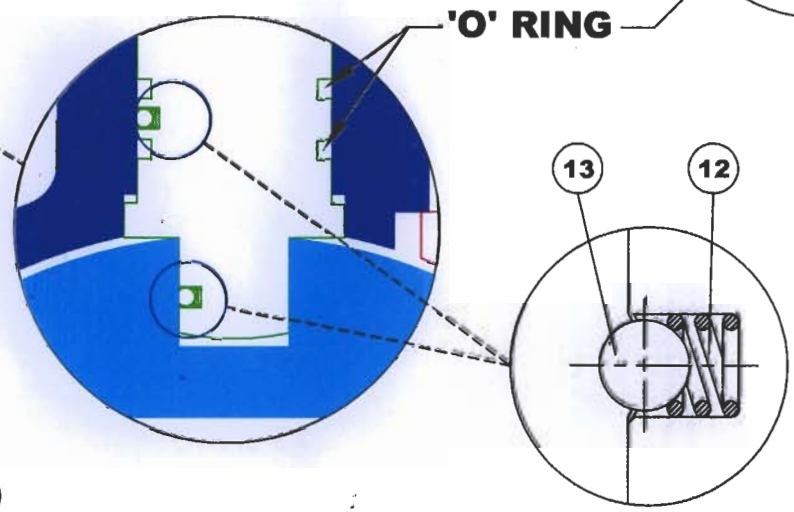
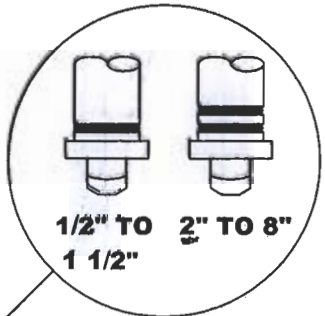
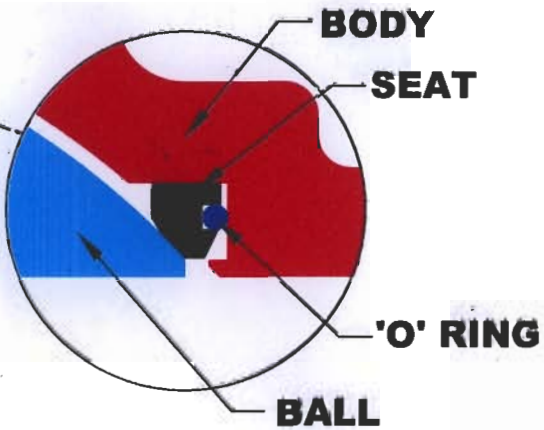
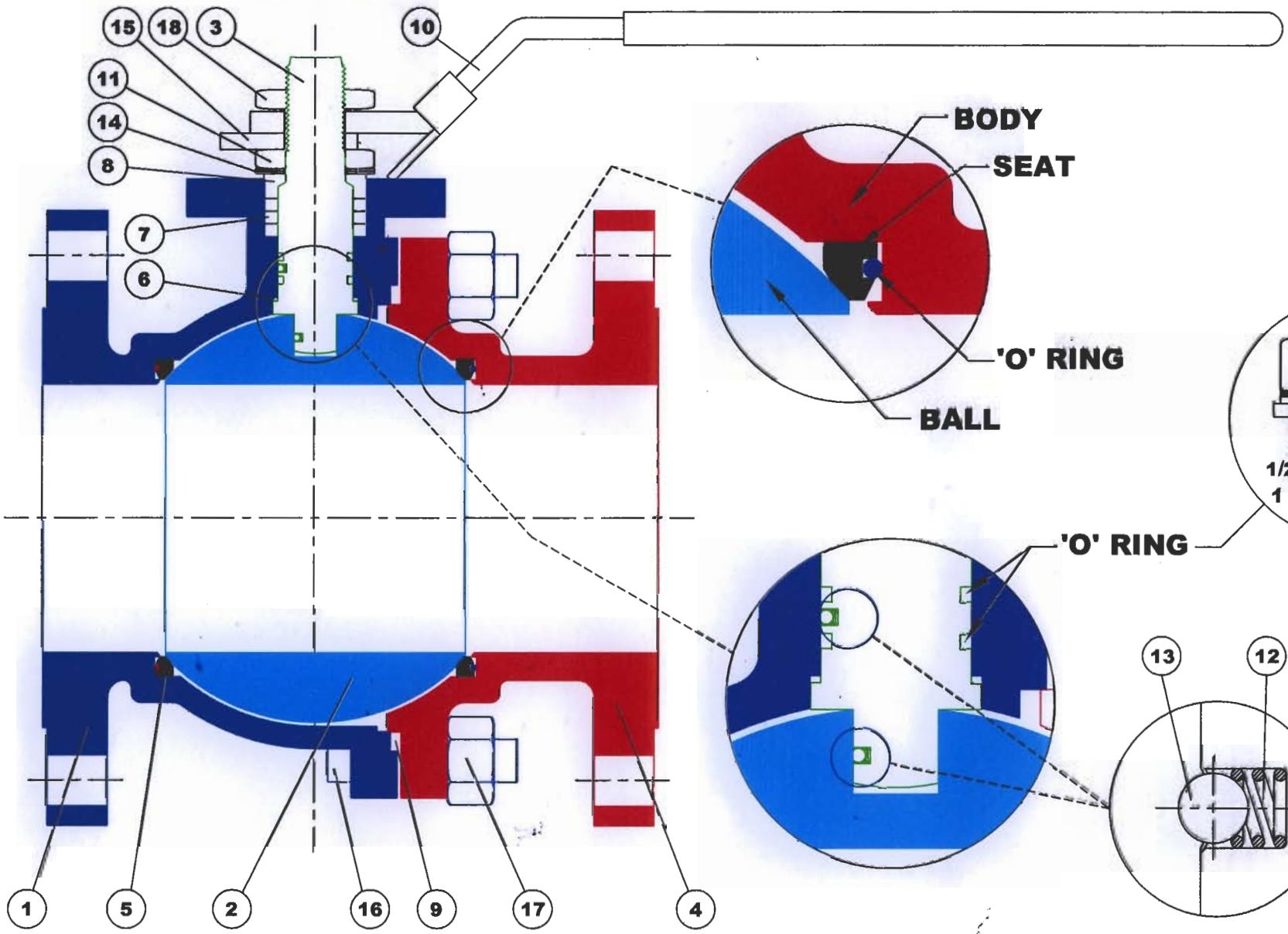
Compared to traditional designs, which utilize a conventional seating arrangement, (ie: Soft Seats only), are susceptible to premature failure under varying conditions, particularly at low (below 0°F) temperatures. The tendency for e.g. Teflon, to harden and shrink under these conditions, allows for relaxation between the ball and seat resulting in leakage, particularly on hard to hold services such as natural gas at low temperatures. Similar circumstances and premature failure also occurs under higher temperature conditions, where e.g. Teflon has a tendency to soften and “creep” after a prolonged period of time.

15 STOP PIN NOT SHOWN



201F

15 STOP NOT SHOWN



F200K

Specifications

- FM and CSA certified for -40 °C to +65 °C (-40 °F to +149 °F)
- Certified to 600 WOG, built to ANSI 600 per B16-34
- Valve sizes: ¼" to 2"
- Regular & Full Port
- ISO 5211 Neck Pad
- 3 piece body with internal entry stem & enclosed cap bolts
- Adjustable stem packing with blowout-proof stem
- Live loaded seats
- Available in threaded, socket-weld, or butt-weld ends
- **Bi Directional and Uni Directional**

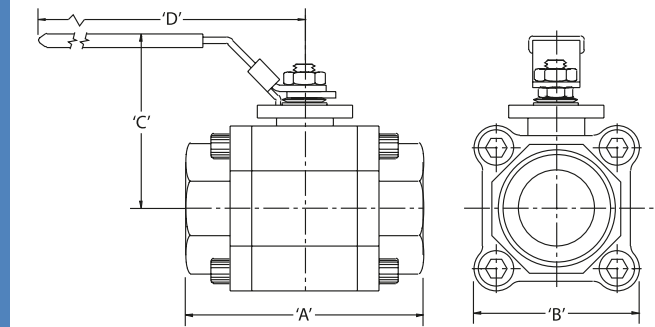


Dimensions

Valve Size	'A'	'B'	'C'	'D'	Cv*	Port	Weights (lbs)
¼"	2.720	1.800	2.060	4.200	8	0.430	2
⅜"	2.720	1.800	2.060	4.200	8	0.430	2
½"	2.720	1.800	2.060	4.200	8	0.430	2
¾"	2.940	2.090	2.610	4.200	12	0.550	2.4
1"	3.500	2.350	3.160	5.100	32	0.810	3.8
1 ¼"	3.900	2.900	3.410	6.100	47	0.980	5.9
1 ½"	4.420	3.100	3.800	7.800	82	1.250	7.6
2"	5.040	3.500	4.020	7.800	120	1.500	10.5

* Turbulence factor has not been calculated.

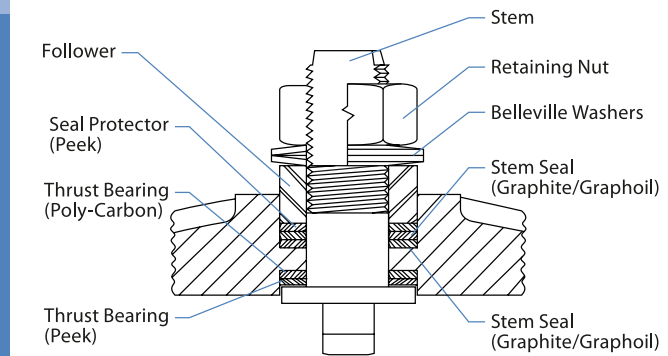
Cv = Gallons per minute of cold water which will flow through the valve with a 1 (one) PSI operating drop.



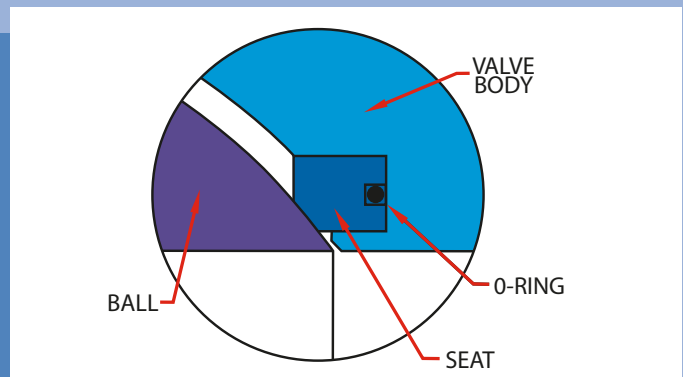
Bill of Material

Qty.	Part Name	CSA/FM201F-66	CSA/FM201F-46	CSA/FM201F-36
1	Body	A351-CF8M	A216-WCB	A352-LCC/LCB
2	Body Ends	A351-CF8M	A216-WCB	A352-LCC/LCB
1	Ball	A351-CF8M	A351-CF8M	A351-CF8M
1	Stem	ASTM A276	ASTM A276	ASTM A276
2	Seat	Polycarbon*	Polycarbon*	Polycarbon*
1	Thrust Bearing	Polycarbon	Polycarbon	Polycarbon
1	Thrust Bearing	Peek	Peek	Peek
1	Stem Seal	Graphoil	Graphoil	Graphoil
2	Body Seal	Buna*	Buna*	Buna*
1	Gland	316SS	316SS	316SS
2	Belleville Washer	304SS	W1-8 CS	304SS
2	Nut	304SS	304SS	304SS
1	Stop Plate	304SS	304SS	304SS
1	Shakeproof Washer	304SS	CS	304SS
1	Lock Pin	304SS	304SS	304SS
8	Cap Bolt	A193-B8	A193-B7	A193-B8
1	Handle	304SS	A283-CS	304SS
2 set	Anti-Static Device	304SS/316SS	304SS/316SS	304SS/316SS
1	Seal Protector	Peek	Peek	Peek

NOTE: * additional O Rings available in 1) EPDM 2) VITON 3) HYPALON 4) PAROFLUOR 5) NEOPRENE 6) BUNA



V50 Stem Design Detail — For "High Cycle" Life



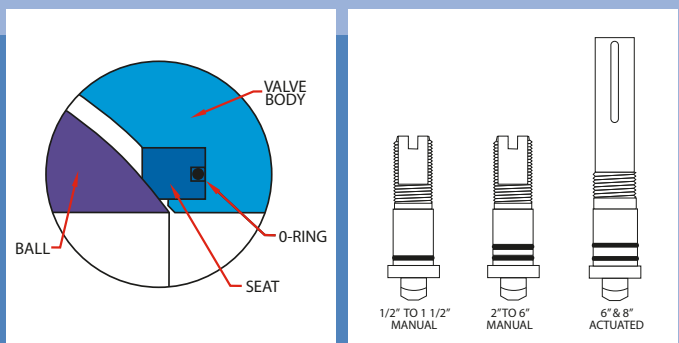
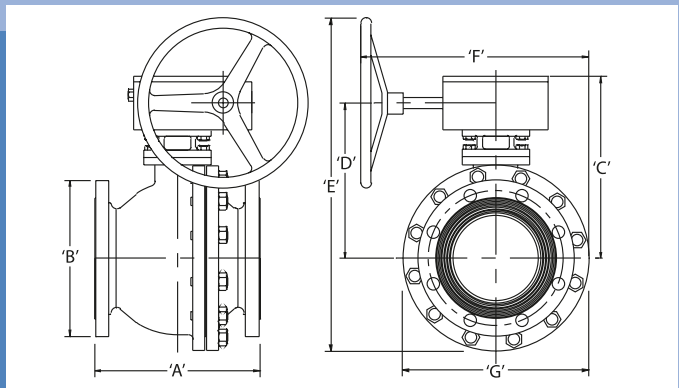
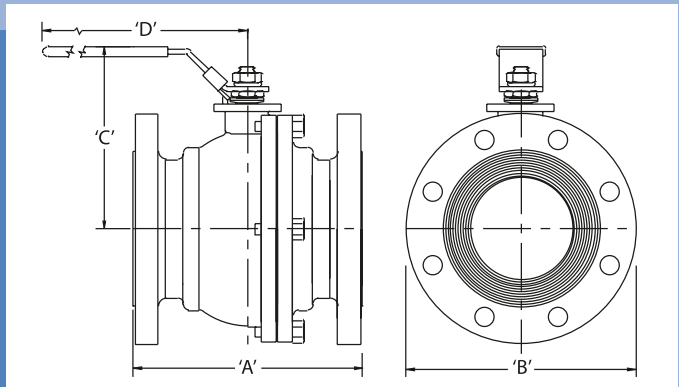
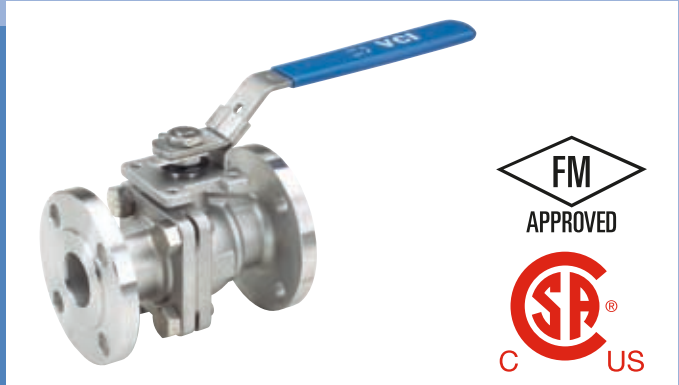
Live Loaded Seats

Specifications

- FM and CSA certified for -40 °C to +65 °C (-40 °F to +149 °F)
- Valve sizes: ½" to 8" Class 150 A.N.S.I.
- ½" to 4" approved to 285 PSI - 6"+8" approved to 125 PSI
- 2 piece body, Full Port, WCB, LCB, CF8M, Ductile Iron
- I.S.O. 5211 Neck Pad
- Solid ball—standard
- Blowout-proof stem
- Live Loaded Seats
- Fire safe certification, API 607 4th edition available
- Bi Directional and Uni Directional

Manufactured and tested to:

A.S.M.E./ANSI B16.5, B16.34; MSS SP - 72, API 608;
N.A.C.E. MR 0175; API 6D, API - 598



Dimensions

Valve Size	'A'	'B'	'C'	'D'	'E'	'F'	'G'	Cv*
½"	4.250	3.500	2.830	5.160				20
¾"	4.625	3.875	3.190	7.000				40
1"	5.000	4.250	3.660	7.800				90
1 ½"	6.500	5.000	4.650	10.040				240
2"	7.000	6.000	5.125	10.040				450
2 ½"	7.500	7.000	5.625	11.935				680
3"	8.000	7.500	6.750	11.935				990
4"	9.000	9.000	7.400	11.935				1950
6"	15.500	11.000	12.250	10.375	22.940	16.000	13.000	5050
8"	18.000	13.500	14.750	12.250	26.065	17.250	15.500	8000

* Turbulence factor has not been calculated.
Cv = Gallons per minute of cold water which will flow through the valve with a 1 (one) PSI operating drop.

Bill of Material

Qty.	Part Name	CSA/FMF200K-66	CSA/FMF200K-46	CSA/FMF200K-36	CSA/FMF200K-04
1	Body	A351-CF8M	A216-WCB	A352-LCC/LCB	A395-Ductile Iron
1	Ball	A351-CF8M	A351-CF8M	A351-CF8M	AISI 1015-1045
1	Stem	ASTM A276 SS316*	ASTM A276 SS316*	ASTM A276 SS316*	ASTM A276 SS316*
1	Body Cap	A351-CF8M	A216-WCB	A352-LCC/LCB	A395-Ductile Iron
2	Seat	Polycarbon*	Polycarbon*	Polycarbon*	Polycarbon*
1	Thrust Bearing	Polycarbon	Polycarbon	Polycarbon	Polycarbon
1 set	Stem Packing	Graphite	Graphite	Graphite	Graphite
1	Gland	316SS	316SS	316SS	316SS
1	Body Gasket	304SS+Graphite	304SS+Graphite	304SS+Graphite	304SS+Graphite
1	Handle	304SS	A283-CS	304SS	304SS
2	Lock Nut	304SS	A283-CS	304SS	304SS
2	Belleve Washer	W1-83CS(SKS)	W1-83CS(SKS)	W1-83CS(SKS)	W1-83CS(SKS)
1	Lock Pin	304SS	304SS	304SS	304SS
1	Stopper	304SS/AISI 1010	A283-CS/AISI1010	304SS/AISI 1010	304SS/AISI 1010
1 set	Cap Bolt / Nuts	A193-B8/A194-GR8	A193-B7/A194-2H	A193-B8/A194-GR8	A193-B7/A194-2H
2	Spring	304SS	304SS	304SS	304SS
2	Plinger	304SS	304SS	304SS	304SS

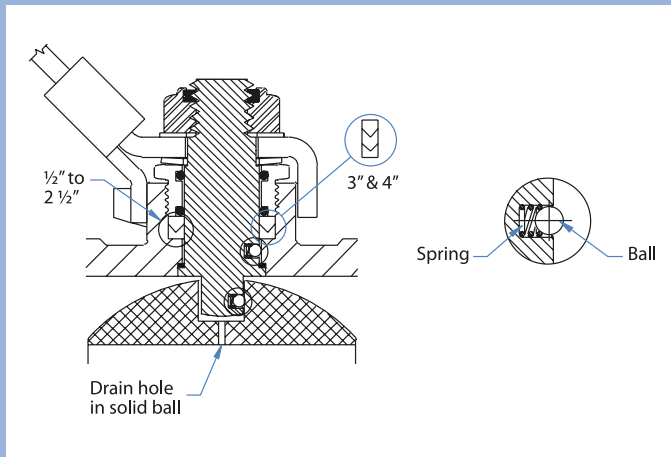
NOTE: * additional O Rings available in 1) EPDM 2) VITON 3) HYPALON 4) PAROFLUOR
5) NEOPRENE 6) BUNA

Live Loaded Seats

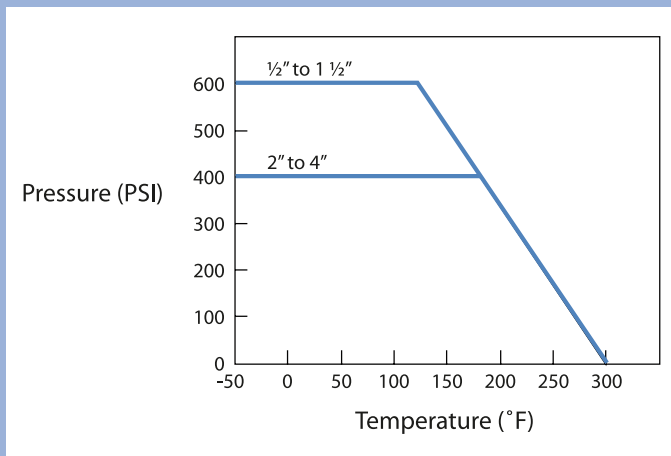
Stem Design



LP, LP Gas, Natural Gas and NH₃



Stem Detail—Live "O" Ring Design



Pressure/Temperature Ratings

Specifications

- Valve sizes: 1/4" to 4" — Full Port
- In-line maintainable by simply removing body bolts
- Blow-out proof stem with Teflon (V-Ring) packaging ring
- Adjustable gland with **"Live O-Ring VCI Seal"**
- Available in WCB and CF8M
- Trim: 316 stainless steel standard—solid ball
- Available in threaded, socket-weld, or butt-weld ends of SCH10/40
- Bi Directional and Uni Directional

Materials List

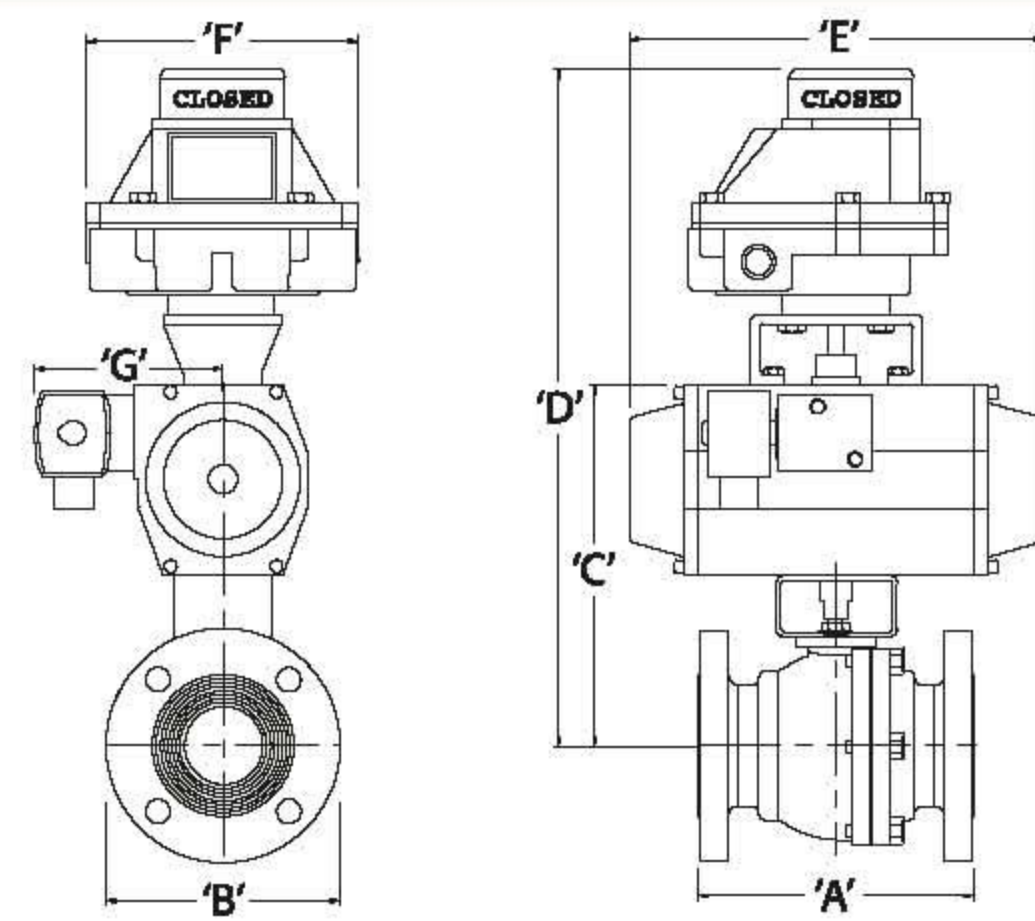
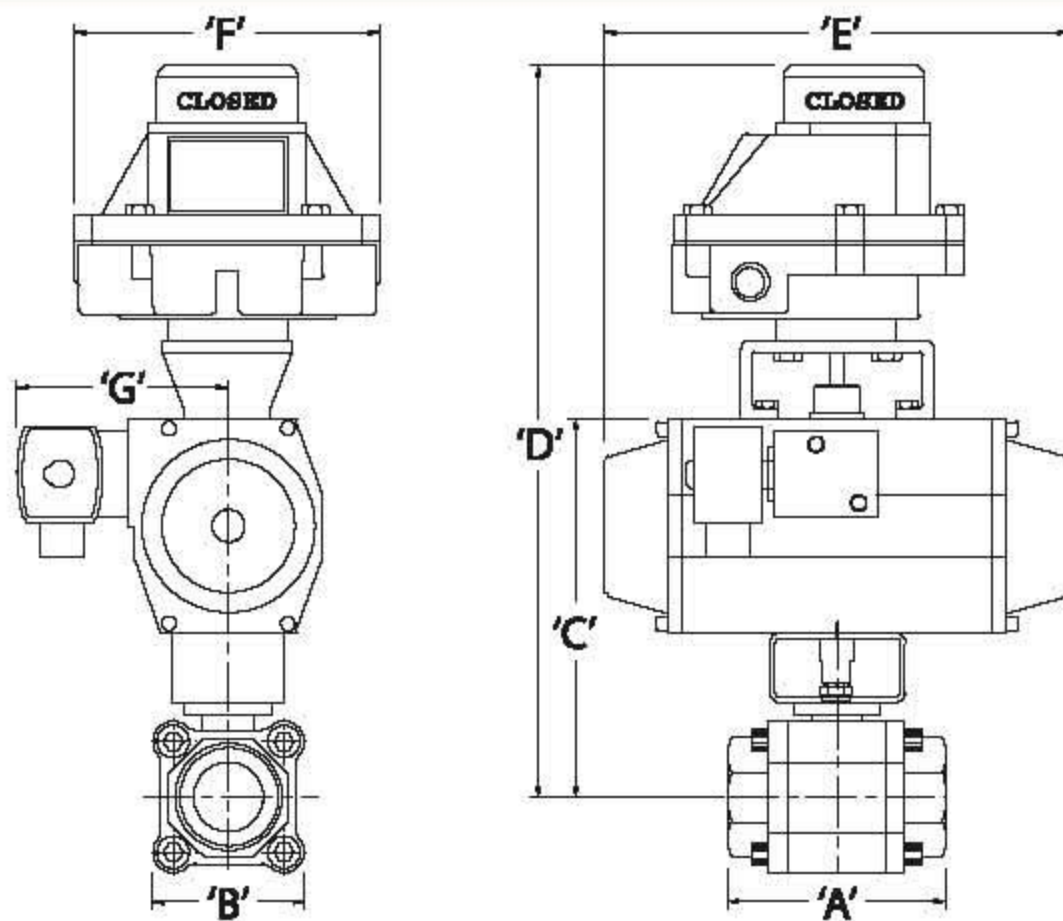
Qty	Part Name	Carbon	Stainless
1	Body	A216-WCB	A351-CF8M
2	Body Ends	A216-WCB	A351-CF8M
1	Ball	A351-CF8M	A351-CF8M
1	Stem	ASTM-A276	ASTM-A276
1	Stem Nut	304SS	304SS
1	Stem Lock Washer	304SS	304SS
1	Locking Lever	304SS	304SS
1	Packing Gland	304SS	304SS
3	Packing Stem	Teflon	Teflon
1	Thrust Washer	Teflon	Teflon
2	Seats	Teflon	Teflon
4	Body Bolts	304SS	304SS
8	Hex Nuts	304SS	304SS
4	Bolt Lock Washer	304SS	304SS
2	Body Seal & Stem Seal	TFE/BUNA	TFE/BUNA

Dimensions

Valve Size	Maximum Break Away Torque (in/lb)	CV	Weights (lbs)
1/4" - 3/8"	45	6	0.97
1/2"	60	15	1.23
3/4"	80	30	1.91
1"	150	60	2.93
1 1/4"	250	110	4.27
1 1/2"	350	130	6.01
2"	450	360	9.50
2 1/2"	800	400	17.38
3"	1300	700	26.20
4"	2400	1000	44.10

NOTE: Maximum Break Away Torque is based on Teflon seats. For additional information, please consult factory.

Emergency Safety Shut-off Valves



Dimensions 201F

Valve Size	'A'	'B'	'C'	'D'	'E'	'F'	'G'*
1/4"	2.720	1.800	5.915	13.950	6.075	6.891	4.290
3/8"	2.720	1.800	5.915	13.950	6.075	6.891	4.290
1/2"	2.720	1.800	5.915	13.950	6.075	6.891	4.290
3/4"	2.940	2.090	6.745	14.769	6.075	6.891	4.290
1"	3.500	2.350	6.980	15.000	8.350	6.891	4.480
1 1/4"	3.900	2.900	7.195	15.220	8.350	6.891	4.480
1 1/2"	4.420	3.100	7.855	15.880	9.250	6.891	4.620
2"	5.040	3.500	8.660	16.685	10.750	6.891	4.820

* This dimension is approximate — solenoid head swivels.

Dimensions F200K

Valve Size	'A'	'B'	'C'	'D'	'E'	'F'	'G'*
1/2"	4.250	3.500	6.000	14.000	6.075	6.891	4.290
3/4"	4.625	3.875	6.250	14.250	6.075	6.891	4.290
1"	5.000	4.250	7.350	15.375	8.350	6.891	4.480
1 1/2"	6.500	5.000	9.585	17.625	9.250	6.891	4.735
2"	7.000	6.000	10.485	18.500	10.750	6.891	4.975
2 1/2"	7.500	7.000	12.435	20.875	12.250	6.891	5.325
3"	8.000	7.500	12.945	21.375	14.500	6.891	5.565
4"	9.000	9.000	14.595	23.000	15.250	6.891	5.955
6"	15.500	11.000	21.000	29.500	20.800	6.891	6.040
**8"	18.000	13.500	25.709	33.709	32.992	6.891	8.519

* This dimension is approximate — solenoid head swivels.

** FM approved only

Approved Limit Switch Options

Figure #	Description
ASCO VR7C2YAA2NGA	2-SPDT, Silver Plated Mechanical - 15 AMP
VCI-CONTROLINK XAB03201E	2-SPDT, Gold Plated Mechanical - 0.1 AMP
ASCO VR7C2YAT2NGA	2-SPDT, Proximity Switches - 3 AMP
VCI-CONTROLINKXAB14201E	2-SPDT, Proximity Switches - 1 AMP
ASCO VR7C2YAD2NGA	2-DPDT Silver Plated Mechanical - 10 AMP
VCI-CONTROLINK XAB0601E	2-DPDT, Gold Plated Mechanical - 0.1 AMP
ASCO VR7C Specifications Explosion Proof	120VAC / 12VDC / 24VDC - NEMA 4, 4X, 7 & 9 DIV 1, CLASS I, II, III, GROUPS B,C,D,E,F, & G DIV 2, CLASS I, GROUPS A,B,C & D CLASS 1, ZONE 1, AEX D IIB T6
CONTROLINK XAB Specifications Explosion Proof	120VAC / 12VDC / 24VDC - NEMA 4, 4X, 7 & 9 MECHANICAL DIV 1, Class I,II, Groups C,D,E,F, & G PROXIMITY DIV 1, Class I,II, Groups C, D,E,F, & G DIV 2, Class I,II, Groups A,B,C, D,F, & G

Approved Solenoid Options

Figure #	Descr.	Temperatures
ASCO EF8551A1MS 120VAC/24VDC/12VDC	AL BODY	-15 °C (-5 °F)
AVC-VCI D06001 120VAC /24VDC/12VDC	AL BODY	-40 °C / °F
ASCO EF8320G-715 120VAC	SS BODY	-40 °C / °F
ASCO EF83220G-705-120 VAC	BRZ BODY	-40 °C / °F
ASCO EF8320G-714- 24VDC	SS BODY	-40 °C / °F
AVC-VCI 20-018 - 120 VAC/24VDC/12VDC	AL BODY	-40 °C / °F
ASCO EV8327-G55 - 24VDC	SS BODY	-40 °C / °F
AVC-VCI 20-018S - 120 VAC/24VDC/12VDC	SS BODY	-40 °C / °F
AVC VCI 20-024 -LOW POWER 1.8 WATTS	AL BODY	-40 °C / °F
ASCO EF8314-G301 LOW POWER 1.4 WATTS	SS BODY	-40 °C / °F
AVC VCI 20-024S -LOW POWER 1.8 WATTS	SS BODY	-40 °C / °F
AVC-VCI D06002- LOW POWER 1.8 WATTS	AL BODY	-40 °C / °F
ASCO V043051 - EXHAUST VALVE	SS BODY	-40 °C / °F
ASCO Solenoid Specifications 120VAC/12VDC / 24VDC - NEMA 4, 4X, 7 & 9 DIV 1, Class I, II, Groups A,B,C & D DIV 2, Class I,II, Groups E,F & G		
AVC-VCI Solenoid Specifications 120VAC/12VDC / 24VDC - NEMA 4, 4X, 7C & 7D DIV I,Class I, Groups A,B,C & D - Class II III, Groups E,F & G Class I, ZONE 1 Exm II T4 AExMII		
* Approved to -40 °C / °F		Explosion Proof

Optional "O" Rings CSA & FM

Material	Temperatures
BUNA	-40 °C + 65 °C (-40 °F + 149 °F)
EPDM	-40 °C + 65 °C (-40 °F + 149 °F)
VITON	-40 °C + 65 °C (-40 °F + 149 °F)
HYPALON	-40 °C + 65 °C (-40 °F + 149 °F)
NEOPRENE	-40 °C + 65 °C (-40 °F + 149 °F)
PARAFLUOR	-15 °C + 65 °C (-5 °F + 149 °F)

For VCI Series 201F and F200K



Certifications

UNDERWRITERS' LABORATORIES OF CANADA

000005/0005124
13991

February 1, 1994

Mr. Mario Bertola
Sales
Valmatic Controls Inc.
1375 Saulteaux Road
S0L 1G6
Windsor, Ontario

Re: **Model Valve for Relief and SP Gas and Liquid Services**
Serial 2229, 177 to 2,372 In. Stock, 600 psi, and
2.2x 3 In. 2100-2300-2400

Dear Mario:

The investigation of the subject product initiated on 000005/0005124, application No. 21177, has been forwarded to your copy of Label Service Procedure 000005/0005124, Volume 12. Please review this document carefully of any errors or omissions.

You are now eligible to attach ULC labels to the equipment detailed in this procedure. Inspections on your factory will be made of the following service operations: check for size of the combination type valve included or address. Information on subsequent inspections will be sent by written or telephonic message to the Scarborough office (416-771-0411).

The listing papers in its preparation will be kept on file for the benefit of your attention.

FM APPROVED

Certificate of Compliance
FIRE PROTECTION EQUIPMENT

000005/0005124

13991

February 1, 1994

Mr. Mario Bertola
Sales
Valmatic Controls Inc.
1375 Saulteaux Road
S0L 1G6
Windsor, Ontario

Re: **Model Valve for Relief and SP Gas and Liquid Services**
Serial 2229, 177 to 2,372 In. Stock, 600 psi, and
2.2x 3 In. 2100-2300-2400

Dear Mario:

The investigation of the subject product initiated on 000005/0005124, application No. 21177, has been forwarded to your copy of Label Service Procedure 000005/0005124, Volume 12. Please review this document carefully of any errors or omissions.

You are now eligible to attach ULC labels to the equipment detailed in this procedure. Inspections on your factory will be made of the following service operations: check for size of the combination type valve included or address. Information on subsequent inspections will be sent by written or telephonic message to the Scarborough office (416-771-0411).

The listing papers in its preparation will be kept on file for the benefit of your attention.

Certificate of Compliance

Certificate: 147907 Master Contract: 21119

Project: 147907 Date Issued: March 16, 2004

Issued to: Valmatic Controls Inc. (VCE)
14 Sheldale Drive, East York
Brimley, Ontario M3J 4L3
CANADA
Attention: Mr. Charles LaClare

Issued by: K. G. Galloway, C.E.T.
Authorized by: Kip Pilon, P.Eng., M.B.A.
Operations Manager

The products listed below are eligible to bear the CSA Mark shown with adjacent indicators 'C' and 'US'.

SP US

EMERGENCIES

CLASS 3171.04 - VALVES (ANSI) - Automatic Valves for Gas Applications
CLASS 3171.04 - VALVES (ANSI) - Automatic Safety Shut-Off Valves
CLASS 3171.07 - VALVES (ANSI) - Automatic Valves for Gas Applications - Certified to US requirements
CLASS 3171.04 - VALVES (ANSI) - Automatic Safety Shut-Off Valves - Certified to US requirements

Models: 2260 series (1 1/2" thru 2") and E200K series (1 1/2" thru 2")

VCE 2260 series three piece SPF bonded valves installed with VCE-AP series pressure spring return safety valves, ANCAP - EP 8 (EN10227/EN10228) series three piece stainless steel and ABOG - VSCU series valves.

The valves are certified for operation at the following conditions:
Operating medium temperature range: -20°C to +10°C (-4°F to 50°F)
Maximum operating pressure: 400 psig for Canada & 600 psig for US
Fluctuating range: 100 VAC, 24 VAC & 12 VAC

VCE E200K series three piece stainless steel valves installed with VCE-AP series pressure spring return safety valves, ANCAP - EP 8 (EN10227/EN10228) series three piece stainless steel and ABOG - VSCU series valves.

The valves are certified for operation at the following conditions:
Operating medium temperature range: -20°C to +10°C (-4°F to 50°F)
Maximum operating pressure: 400 psig for Canada & 600 psig for US
Fluctuating range: 100 VAC, 24 VAC & 12 VAC

Certificate of Compliance

Master Contract: 21119
Date Issued: March 12, 2004

Certificate: 147902
Project: 147902

Issued to: Valmatic Controls Inc. (VCE)
14 Sheldale Drive, East York
Brimley, Ontario M3J 4L3
CANADA
Attention: Mr. Charles LaClare

Issued by: K. G. Galloway, C.E.T.
Authorized by: Kip Pilon, P.Eng., M.B.A.
Operations Manager

The products listed below are eligible to bear the CSA Mark shown with adjacent indicators 'C' and 'US'.

SP US

EMERGENCIES

CLASS 3171.04 - VALVES (ANSI) - Automatic Valves for Gas Applications
CLASS 3171.04 - VALVES (ANSI) - Automatic Safety Shut-Off Valves
CLASS 3171.07 - VALVES (ANSI) - Automatic Valves for Gas Applications - Certified to US requirements
CLASS 3171.04 - VALVES (ANSI) - Automatic Safety Shut-Off Valves - Certified to US requirements

Models: 2260 series (1 1/2" thru 2") and E200K series (1 1/2" thru 2")

VCE 2260 series three piece SPF bonded valves installed with VCE-AP series pressure spring return safety valves, ANCAP - EP 8 (EN10227/EN10228) series three piece stainless steel and ABOG - VSCU series valves.

The valves are certified for operation at the following conditions:
Operating medium temperature range: -20°C to +10°C (-4°F to 50°F)
Maximum operating pressure: 400 psig for Canada & 600 psig for US
Fluctuating range: 100 VAC, 24 VAC & 12 VAC

VCE E200K series three piece stainless steel valves installed with VCE-AP series pressure spring return safety valves, ANCAP - EP 8 (EN10227/EN10228) series three piece stainless steel and ABOG - VSCU series valves.

The valves are certified for operation at the following conditions:
Operating medium temperature range: -20°C to +10°C (-4°F to 50°F)
Maximum operating pressure: 400 psig for Canada & 600 psig for US
Fluctuating range: 100 VAC, 24 VAC & 12 VAC

TECHNICAL STANDARDS & SAFETY AUTHORITY

CERTIFICATE OF AUTHORIZATION
CERTIFICATE OF AUTHORIZATION

This is to certify the named company is having had the advantage of their quality program verified for the scope shown below.

Company: Valmatic Controls Inc.
14 Sheldale Drive
Brimley, Ontario M3J 4L3
Canada

Authorized by: K. G. Galloway, C.E.T.
Date: Feb 27, 2004

Expiry: July 6, 2004

Examination Number: 04-426

Authorized by: K. G. Galloway, C.E.T.

Authorized by: K. G. Galloway, C.E.T.

FM APPROVED

Certificate of Compliance
FIRE PROTECTION EQUIPMENT

000005/0005124

13991

February 1, 1994

Mr. Mario Bertola
Sales
Valmatic Controls Inc.
1375 Saulteaux Road
S0L 1G6
Windsor, Ontario

Re: **Model Valve for Relief and SP Gas and Liquid Services**
Serial 2229, 177 to 2,372 In. Stock, 600 psi, and
2.2x 3 In. 2100-2300-2400

Dear Mario:

The investigation of the subject product initiated on 000005/0005124, application No. 21177, has been forwarded to your copy of Label Service Procedure 000005/0005124, Volume 12. Please review this document carefully of any errors or omissions.

You are now eligible to attach ULC labels to the equipment detailed in this procedure. Inspections on your factory will be made of the following service operations: check for size of the combination type valve included or address. Information on subsequent inspections will be sent by written or telephonic message to the Scarborough office (416-771-0411).

The listing papers in its preparation will be kept on file for the benefit of your attention.



Local Distributor/Agent



Toll free in US & Canada
1-888-VCI-LOWE
www.gvs-vci.com



Certificate of Compliance

FIRE PROTECTION EQUIPMENT

This certificate is issued for the following equipment:

Model 201F Automatic Gas Safety Shutoff Valve

Approval Guide Listing: Category: Gas Safety Shutoff Valves, Automatic Opening, Electric & Pressure Opening & Holding

a 201F-b-P(c)-SE-V50-LH-CSA-FM-d-e-f

a = size (1/4, 3/8, 1/2, 3/4, 1, 1-1/4, 1-1/2, or 2 inch)

b = body material (46 – WCB Carbon Steel, 66 – CF8M Stainless Steel, 36- LCB/LCC Carbon Steel)

c = seal material (B – Buna, V – Viton, H – Hypalon, N – Neoprene, O – Paroflour, E – EPDM)

d = Actuator (A AP2SR5-LT-DTS)

e = limit switch (ASCO VR7C2YAA(or AD or AT)2NBA or CONTROLINK(VCI) XAB03(or 06 or 14 or 16)201-LS

f = solenoid (ASCO EF8320G704(or 714, 715, 712, 702, 705), EV8327-G55, EF8551A1MS, EF8314G301 or Automatic Valve Co. (VCI)D20-018-DB(or DA)-S-**Y, D20-024-12/24, D20-02-12/24, D06-001**

** indicates coils 7019-9AAY-120VAC, 7091-9DBY-24VDC, 7019-9DAY-12VDC)

Approved for:

VCI
14 Melanie Drive Units 9-11
Brampton, Ontario L6T 4L3
Canada

This certifies that the equipment described has been found to comply with the applicable requirements of the following FM Approval Standards and other documents:

Approval Standards

Class Number

7412

Date

May 2005

Other Standards

Organization, Designation

Date

Original Approval Project Identification: 3021671

Approval Granted: May 20, 2005

Subsequent Revisions:

FM Approvals



An **FM** Global Enterprise

Donald E Major
Donald E. Major
Technical Team Manager, Electrical Systems

June 7, 2005
Date

Cert. No. 3021671 (1)



Certificate of Compliance

FIRE PROTECTION EQUIPMENT

This certificate is issued for the following equipment:

Model F200K Automatic Gas Safety Shutoff Valve

Approval Guide Listing: Category: Gas Safety Shutoff Valves, Automatic Opening, Electric & Pressure Opening & Holding

a F200K-b-P(c)G-150RF*-LH-CSA

a = size (1/2, 3/4, 1, 1-1/2, 2, 2-1/2, 3, 4, 5, 6, or 8 inch)

b = body material (46 – WCB Carbon Steel, 66 – CF8M Stainless Steel, 36- LCB/LCC Carbon Steel)

c = seal material (B – Buna, V – Viton, H – Hypalon, N – Neoprene, O – Paroflour, E – EPDM)

* = 150RF – 150# Raised Faced & 150# Flat Faced

d = Actuator (A AP2SR5-LT-DTS)

e = limit switch (ASCO VR7C2YAA(or AD or AT)2NBA or CONTROLINK(VCI)XAB03(or 06 or 14 or 16)201-LS

f = solenoid (ASCO EF8320G704(or 714, 715, 712, 702, 705), EV8327-G55, EF8551A1MS, EF8314G301, V043051 or Automatic Valve Co.(VCI) D20-018-DB(or DA)-S-**, D20-024-12/24, D20-02-12/24, D06-001**

** indicates coils 7019-9AAY-120VAC, 7091-9DBY-24VDC, 7019-9DAY-12VDC)

Approved for:

VCI
14 Melanie Drive Units 9-11
Brampton, Ontario L6T 4L3
Canada

This certifies that the equipment described has been found to comply with the applicable requirements of the following FM Approval Standards and other documents:

Approval Standards

Class Number

7412

Date

May 2005

Other Standards

Organization, Designation

Date

Original Approval Project Identification: 3021671

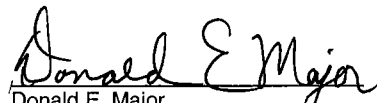
Approval Granted: May 20, 2005

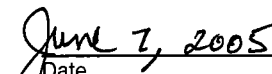
Subsequent Revisions:

FM Approvals



An **FM** Global Enterprise


Donald E. Major
Technical Team Manager, Electrical Systems


Date

Cert. No. 3021671 (2)



CSA INTERNATIONAL

Certificate of Compliance

Certificate: 1473947

Master Contract: 221810

Project: 1586980

Date Issued: 2005/03/16

Issued to: VCI

14 Melanie Dr, Units 9-11
Brampton, Ontario L6T 4L3
Canada
Attention: Mr. Charles Lo Cicero

The products listed below are eligible to bear the CSA Mark shown with adjacent indicators 'C' and 'US'



Issued by: Jerry Tang-Kong, C.E.T.

Authorized by: John Skinner, Product Group Manager

PRODUCTS

- CLASS 3371 84** - VALVES (GAS)-Automatic Safety Shutoff For - Gas Appliances-Certified to U.S. Standards
- CLASS 3371 83** - VALVES (GAS) - Automatic-For Gas Appliances-Certified to U.S. Standards
- CLASS 3371 04** - VALVES (GAS) - Automatic Safety Shutoff For Gas Appliances
- CLASS 3371 03** - VALVES (GAS) - Automatic - For Gas Appliances

Models: 201F series (1/4" thru 2") and F200K series (1/2" thru 6")

VCI- 201F series three pieces NPT threaded valves mounted with VCI-AP series pneumatic spring return double acting actuator, ASCO - EF 8320/EV8327/EF8551 series direct mount solenoid and ASCO - VR7C

The 'C' and 'US' indicators adjacent to the CSA Mark signify that the product has been evaluated to the applicable CSA and ANSI/UL Standards, for use in Canada and the U.S., respectively. This 'US' indicator includes products eligible to bear the 'NRTL' indicator. NRTL, i.e. National Recognized Testing Laboratory, is a designation granted by the U.S. Occupational Safety and Health Administration (OSHA) to laboratories which have been recognized to perform certification to U.S. Standards.



Certificate: 1473947

Master Contract: 221810

Project: 1586980

Date Issued: 2005/03/16

limit switch.

The valves are certified for operation at the following conditions:

Operating ambient temperature range: -40°C to 65°C (-40°F to 149°F) ; -15° C and +65°C for PAROFLOUR Seals only.

Maximum operating pressure: 600 psig for Canada & 60 psig for US

Electrical rating: 120 VAC, 24 VDC & 12 VDC

VCI- F200K series flange end valves mounted with VCI-AP series pneumatic spring return double acting actuator, ASCO – EF 8320/EV8327/EF8551 series direct mount solenoid and ASCO – VR7C limit switch.

The valves are certified for operation at the following conditions:

Operating ambient temperature range: -40°C to 65°C (-40°F to 149°F)

Maximum operating pressure: 285 psig for Canada & 60 psig for US

Electrical rating: 120 VAC, 24 VDC & 12 VDC

For Canada only in compliance with CGA 3.9 standard

The valves with the capacity rating greater than 400,000 Btu/hr are certified for operation at the maximum operating pressure > 60 psig and shall be used in the Commercial/Industrial (C/I) applications.

APPLICABLE REQUIREMENTS

CSA 6.5 - 2000/ANSI Z21.21 - 2000 Automatic Valves for Gas Appliances

CSA 6.5a - 2001/ANSI Z21.21a - 2001 Automatic Valves for Gas Appliances

CGA 3.9-M94 Automatic Safety Shut-Off Gas Valves

MARKINGS

Each actuator shall mark with the Submitter's identification, model designation, electrical rating, terminal identification, date code and/or serial number and the CSA Monogram with "C-US" indicator.



CSA INTERNATIONAL

Certificate of Compliance

Certificate: 1537021

Master Contract: 221810

Project: 1656559

Date Issued: 2005/05/27

Issued to: VCI

14 Melanie Dr, Units 9-11
Brampton, Ontario L6T 4L3
Canada
Attention: John Graniero

The products listed below are eligible to bear the CSA Mark shown with adjacent indicators 'C' and 'US'



Issued by: Jerry Tang-Kong, C.E.T.

Authorized by: John Skinner, Product Group Manager

PRODUCTS

CLASS 3371 94 - VALVES (GAS)-Manually Operated Metallic for Use - in Piping Systems-Certified to U.S. Standards

CLASS 3371 10 - VALVES (GAS) - Lever Operated Non-Lubricated Shutoff

Models: 201F series (1/4" thru 2") and F200K series (1/2" thru 6")

VCI- 201F series three pieces NPT threaded valves are certified for operation at ambient temperature range of -40°C to 65°C (-40°F to 149°F) and the operating pressure of 600 psig for Canada & 60 psig for US

· 1/4" & 3/8" valves are certified for Canadian requirements only.

The 'C' and 'US' indicators adjacent to the CSA Mark signify that the product has been evaluated to the applicable CSA and ANSI/UL Standards, for use in Canada and the U.S., respectively. This 'US' indicator includes products eligible to bear the 'NRTL' indicator. NRTL, i.e. National Recognized Testing Laboratory, is a designation granted by the U.S. Occupational Safety and Health Administration (OSHA) to laboratories which have been recognized to perform certification to U.S. Standards.

Actuator: VCI; AP2 (1/4" – 3/4"), AP3 (1" & 1¼"), AP3.5 (1½"), AP4 (2"), AP4.5 (2½"), AP5 (3") & AP5.5 (4")

Solenoid: ASCO – EF8320G or EV8327G or EF8551A, EF8314 and VCI D20018/D06002

Limit Switch: ASCO – VR7C2YAA2NGA; and Controlink XAB03201E, XAB06201E, XAB14201E, XAB16201E.

Ambient Temperature: -40°C to 65°C (-40°F to 149°F)(15°C for PAROFLUOR,

Max Operating Pressure: 201F: 600 psig for Canada & 60 psig for US
F200K 285 psig for Canada & 60 psig for US

Installation: Multipose

Capacity and Cv: Refer to Manufacturer's Printed Instruction Manual

Electrical Ratings: 120 VAC, 60 Hz, 0.12A Holding Current and 1.33A Operating Current
24 VDC and 12 VDC

The above mentioned solenoids and limit switches are CSA certified for electrical safety.

\vem

Copyright © 2006 CSA International. All rights reserved.



CSA INTERNATIONAL

Certificate: 1537021

Master Contract: 221810

Project: 1656559

Date Issued: 2005/05/27

VCI- F200K series flange end valves certified for operation at ambient temperature range of -40°C to 65°C (-40°F to 149°F) and the operating pressure of 285 psig for Canada & 60 psig for US

APPLICABLE REQUIREMENTS

CAN/CGA-3.16-M88 Lever Operated Non-Lubricated Gas Shut-Off Valves.

ASME B16.33-2002 Manually Operated Metallic Gas Valves For Use In Gas Piping Systems up to 125 psig. (1/2" thru 2").

ASME B16.38-1990 Manually Operated Metallic Gas Valves For Use In Gas Piping Systems up to 125 psig. (2½" thru 12").

CGA IR No. 60 Lever Operated Gas Shut-Off Valves

MARKINGS

Each actuator shall mark with the Submitter's identification, model designation, date code and/or serial number, standard number and the CSA Monogram with "C-US" indicator



CSA INTERNATIONAL

Certificate of Compliance

Certificate: 1473947

Master Contract: 221810

Project: 1867468

Date Issued: 2007/01/05

Issued to: VCI

7370 Bramalea Road
Mississauga, ON L5S 1N6
Canada
Attention: Mr. Charles Lo Cicero

The products listed below are eligible to bear the CSA Mark shown with adjacent indicators 'C' and 'US'



Issued by: Richard Clark

Authorized by: Gianluca Arcari, P.Eng.,
Product Group Manager

PRODUCTS

- CLASS 3371 84 - VALVES (GAS)-Automatic Safety Shutoff For - Gas Appliances-Certified to U.S. Standards
- CLASS 3371 83 - VALVES (GAS) - Automatic-For Gas Appliances-Certified to U.S. Standards
- CLASS 3371 04 - VALVES (GAS) - Automatic Safety Shutoff For Gas Appliances
- CLASS 3371 03 - VALVES (GAS) - Automatic - For Gas Appliances

Models: 201F series (1/4" thru 2") and F200K series (1/2" thru 6")

VCI- 201F series three pieces NPT threaded valves mounted with VCI-AP series pneumatic spring return double acting actuator, ASCO – EF 8320/EV8327/EF8551, EF8314 and VCI D20018/D06002 series direct

The 'C' and 'US' indicators adjacent to the CSA Mark signify that the product has been evaluated to the applicable CSA and ANSI/UL Standards, for use in Canada and the U.S., respectively. This 'US' indicator includes products eligible to bear the 'NRTL' indicator. NRTL, i.e. National Recognized Testing Laboratory, is a designation granted by the U.S. Occupational Safety and Health Administration (OSHA) to laboratories which have been recognized to perform certification to U.S. Standards.



CSA INTERNATIONAL

Certificate: 1473947

Master Contract: 221810

Project: 1867468

Date Issued: 2007/01/05

mount solenoid and ASCO – VR7C, Controlink - XAB 03201E, XAB06201E, XAB14201E, XAB16201E limit switches.

The valves are certified for operation at the following conditions:

Operating ambient temperature range: -40°C to 65°C (-40°F to 149°F) ; -15° C and +65°C for PAROFLUOR Seals only.

Maximum operating pressure: 600 psig for Canada & 60 psig for US-1/2" to 4" ; Max Pressure 125psig for Canada & 60 psig for US - 6" .

Electrical rating: 120 VAC, 24 VDC (Low Consumption for ASCO EF8314; VCI D20018) & 12 VDC.

VCI- F200K series flange end valves mounted with VCI-AP series pneumatic spring return double acting actuator, ASCO and VCI Series Direct-Mount Solenoid and Limit switches.

The valves are certified for operation at the following conditions:

Operating ambient temperature range: -40°C to 65°C (-40°F to 149°F)

Maximum operating pressure: 285 psig for Canada & 60 psig for US - 1/2" to 4" ; Max. Pressure 125psig for Canada & 60psig for US - 6" .

Electrical rating: 120 VAC; 24 VDC (Low Consumption for ASCO EF8314 and VCI D20018) & 12 VDC.

For Canada only in compliance with CGA 3.9 standard

The valves with the capacity rating greater than 400,000 Btu/hr are certified for operation at the maximum operating pressure > 60 psig and shall be used in the Commercial/Industrial (C/I) applications.

APPLICABLE REQUIREMENTS

CSA 6.5 - 2000/ANSI Z21.21 - 2000 Automatic Valves for Gas Appliances

CSA 6.5a - 2001/ANSI Z21.21a - 2001 Automatic Valves for Gas Appliances

CSA 6.5b - 2004/ANSI Z21.21b - 2004 Automatic Valves for Gas Appliances

CSA 6.5-2005/ANSI Z21.21-2005 Automatic Valves for Gas Appliances

CGA 3.9-M94 Automatic Safety Shut-Off Gas Valves

MARKINGS

Each actuator shall mark with the Submitter's identification, model designation, electrical rating, terminal identification, date code and/or serial number and the CSA Monogram with "C-US" indicator.



Supplement to Certificate of Compliance

Certificate: 1473947

Master Contract: 221810

The products listed, including the latest revision described below, are eligible to be marked in accordance with the referenced Certificate.

Product Certification History

Project	Date	Description
1867468	2007/01/05	Update Certification to Larger Size Actuators on Valves upto 4"
1837787	2006/10/27	Update to 1473947 to add 300# Flanges
1661392	2005/05/24	Alternate limit switches, Controlink XAB Series.
1586980	2005/03/16	Alternate seat and seal materials, 201F Series (1/4" thru 2") and F200K Series (1/2" thru 6").
1473947	2004/03/18	C/US Certification of Automatic Gas Valves, 201 Series (1/4" thru 2"), F200K Series (1/2" thru 4").



INCORPORATED 1920

UNDERWRITERS' LABORATORIES OF CANADA

In Reply
Please Refer to

CMH1485/CMH1524
13371

February 3, 1994

Mr. Mario Martino
Sales
Valmatic Controls Inc.
7370 Bramalea Road
Unit 6
Mississauga, Ontario
L5S 1N6

**Subject: Shut-Off Valves for Natural and LP Gas and Liquid Service,
Series 202FB, 1/2 to 1-1/2 in. Sizes, 600 psi, and
2 to 4 in. Sizes, 400 psi**

Dear Mario:

The investigation of the subject product initiated by File No. CMH1458/CMH1524, Application No. 13371 has been completed.

Enclosed is your copy of Label Service Procedure CMH1485/CMH1524, Volume II. Please review this material carefully and inform us promptly of any errors or omissions.

You are now eligible to attach ULC labels to all of the products meeting the requirements detailed in this Procedure.

Inspections at your factory will be under the supervision of our Follow-Up Services Department. Labels for attachment to listed products are of the combination type which includes your company name and address. Information with respect to the procurement of ULC labels may be obtained by writing or telephoning our Follow-Up Services Department at the Scarborough office (416)757-3611.

The Listing Report is in preparation and will be forwarded to you in the near future.

Samples, required for the investigation will, in due course, be returned to your attention.

...../2



CSA-FM END USERS LIST

SERIES 201F AND F200K

Client	Year	Location
ALSTROM AUSTRALIA	2006	THAILAND
BA ENERGY	2006	AB. CANADA
CARGILL	2006	AB. CANADA
CENTRAL ALBERTA MIDSTREAM	2005	AB. CANADA
CITY OF VICTORVILLE CA-USA -	2005	CALIFORNIA USA
CORNING GLASS	2005	JACKSON, TENN USA
CONOCO-PHILIPS	2005	ALASKA-USA
HUSKY ENERGY	2006- 08	AB. CANADA
IRVING OIL	2006- 09	NB. CANADA
NEXEN ENERGY	2005	AB. CANADA
PETRO-CANADA	2004- 08	ON. CANADA
PETRO-CANADA	2005- 09	AB. CANADA
PETRO-CANADA HORIZON	2008- 09	QE. CANADA
TORONTO PEARSON AIRPORT	2005	ON. CANADA

SUNCOR ENERGY	2006	ON. CANADA
TCPL GASIFICATION	2006	ED. AB. CANADA
NATIONAL FUEL	2006	PENNSYLVANIA USA
SHERRIT	2006	AB. CANADA
DOOSAN HEAVY INDUSTRIES	2006	SAUDI ARABIA
SHELL CANADA	2007- 09	AB. CANADA
AMERI STEEL	2006	ON. CANADA
UNION GAS (SPECTRA ENERGY)	2006 - 09	ON. CANADA
DOFASCO (ARCELOR-MITTAL)	2006- 07	ON. CANADA
STELCO	2007	ON. CANADA
SYLVAN CHEMICALS	2008	OHIO USA
DALKIA ENERGY	2008	NEW JERSEY USA
CONOCO PHILIPS	2008	ALASKA USA
ENCANA CORP	2008- 09	AB. CANADA
ARCELOR MITTALL DOFASCO	2008	ON. CANADA
ENDBRIDGE USA	2009	HOUSTON TEXAS
IMPERIAL OIL	2008	AB. CANADA
CAVENDISH FARMS	2008	PEI. CANADA
MOSIAC POTASH	2009	SASK. CANADA
ENCANA CORP	2009	B.C. CANADA



DEKKA VACUUM	2009	OHIO USA
MEG ENERGY CORP	2009	AB, CANADA
CORNING GLASS	2009	ILLINOIS, USA
FAIRFAX OPERATIONS	2009	OKLAHOMA,USA
GREENFIELD ENERGY	2009	ONT, CANADA
ADVANCED COMBUSTION	2010	ONT, CANADA
BARR ROSIN	2010	AB, CANADA
MOSIAC POTASH	2010	SASK. CANADA
MEG ENERGY	2010	AB, CANADA
IMPERIAL OIL (EXXON-MOBIL)	2010	AB. CANADA
VALE INCO	2010	ONT, CANADA

CANADIAN REGISTRATION NUMBER

PROVINCE	CRN
BRITISH COLUMBIA	OC95581.51
ALBERTA	OC95581.52
SASKATCHEWAN	OC95581.53
MANITOBA	OC95581.54
ONTARIO	OC95581.5
QUEBEC	OC95581.56
NEW BRUNSWICK	OC95581.57
NOVA SCOTIA	OC95581.58
PRINCE EDWARD ISLAND	OC95581.59
NEWFOUNDLAND	OC95581.50
NUNAVUT	OC95581.5N
NORTHWEST TERRITORIES	OC95581.5T
YUKON	OC95581.5Y